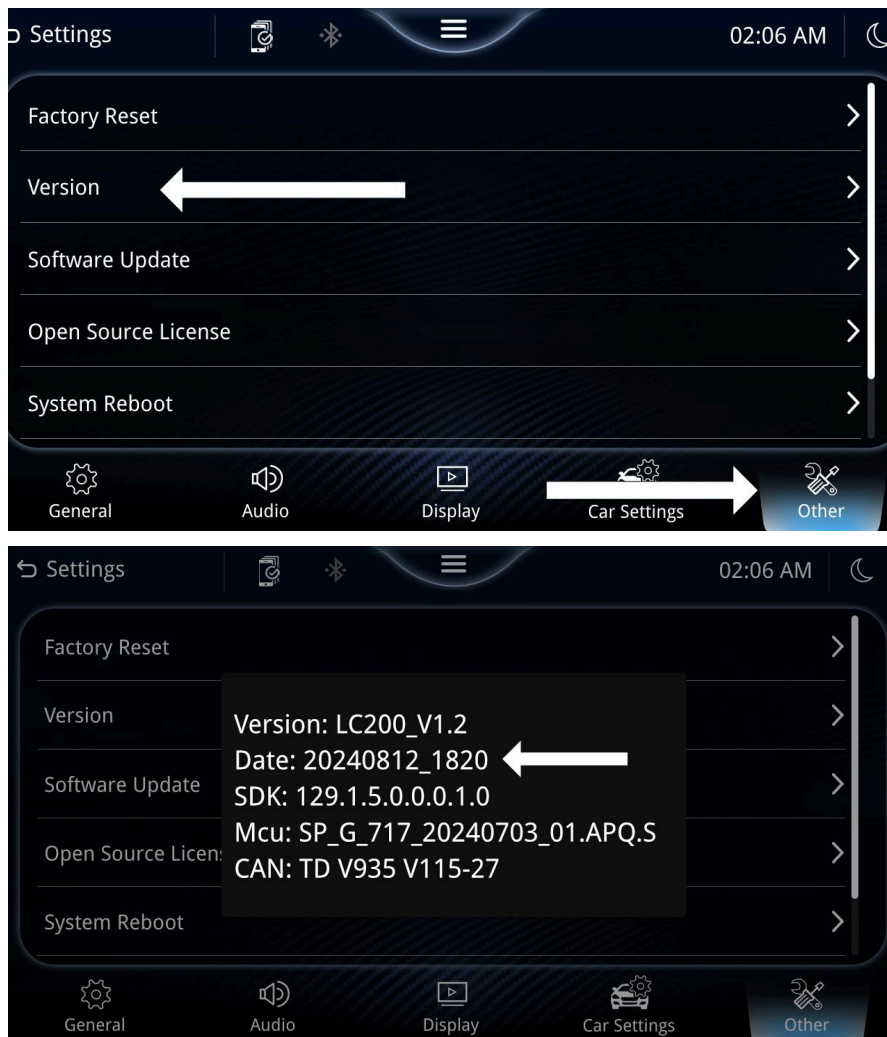


AMUTO53 Update Guide

Notes before Continuing

- Your currently saved settings will be reset to factory default on your Head Unit. You can take pictures of any settings you have changed, such as EQ sliders, so you can restore those settings after the update is complete.
- You will also require a blank USB device with a storage capacity of 32GB or less that is formatted in FAT32.
- We recommend updating to the latest version only if you are having issues or will be utilising one of the new features.
- **This will be a two step update process which will require the update process to be done twice with two different groups of files.**

You can check if your Aerpro headunit requires an update by navigating to the Version section on your headunit in the settings and comparing the date of the current firmware to that of the firmware on our Aerpro website.



If the date on the Aerpro website is later than the date listed on your head unit, then an update is available.

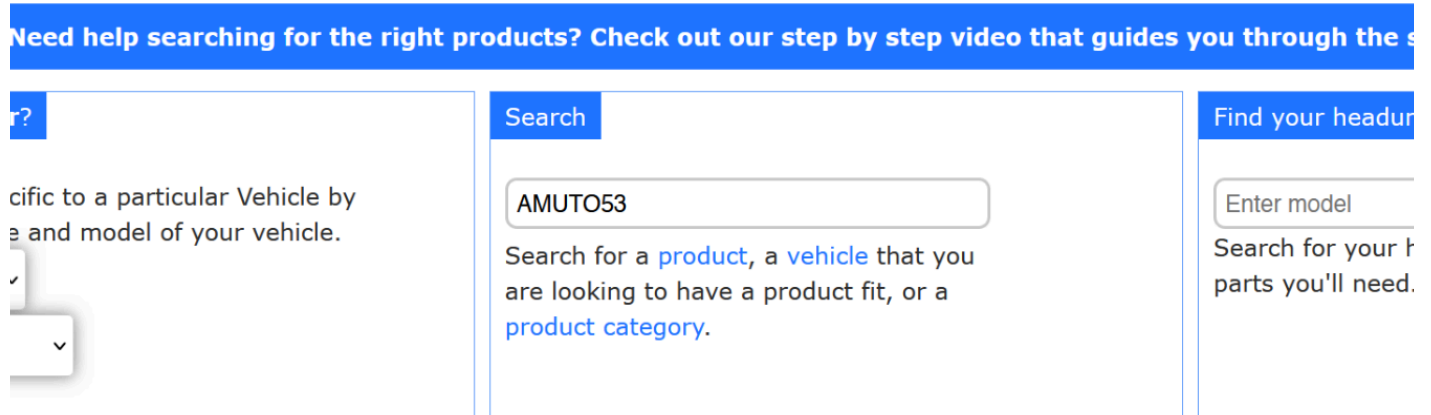
Note, that there isn't any harm in updating the firmware anyway if you're unsure.

AMUTO53 Update Guide

Step 1

Toyota LC200 VX/Sahara 2016-2021 (<https://aerpro.com/AMUTO53>)

Navigate to the Aerpro website (<https://aerpro.com>) and search for your head units model number based on the system version your head unit lists.

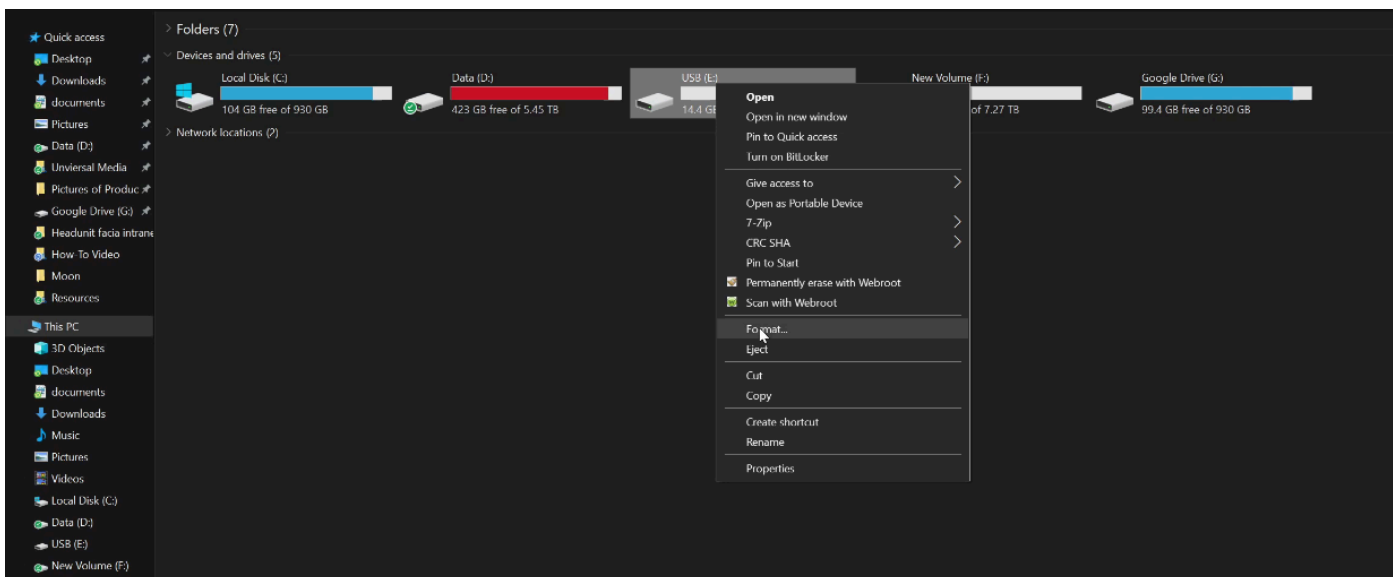


Scroll down the bottom and click the zip file to download the firmware update.

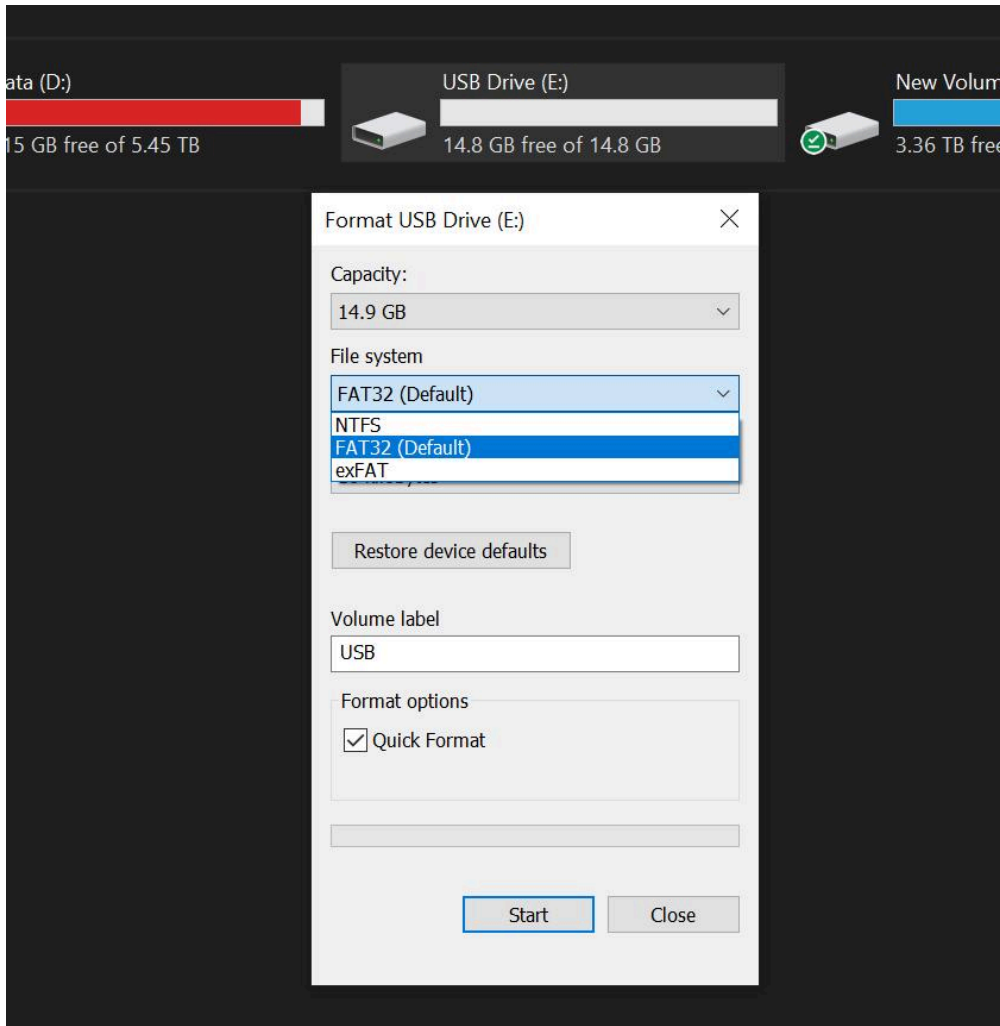
The files will be contained in a zip file. We can use Windows built in zip manager to open the zip file to view the files



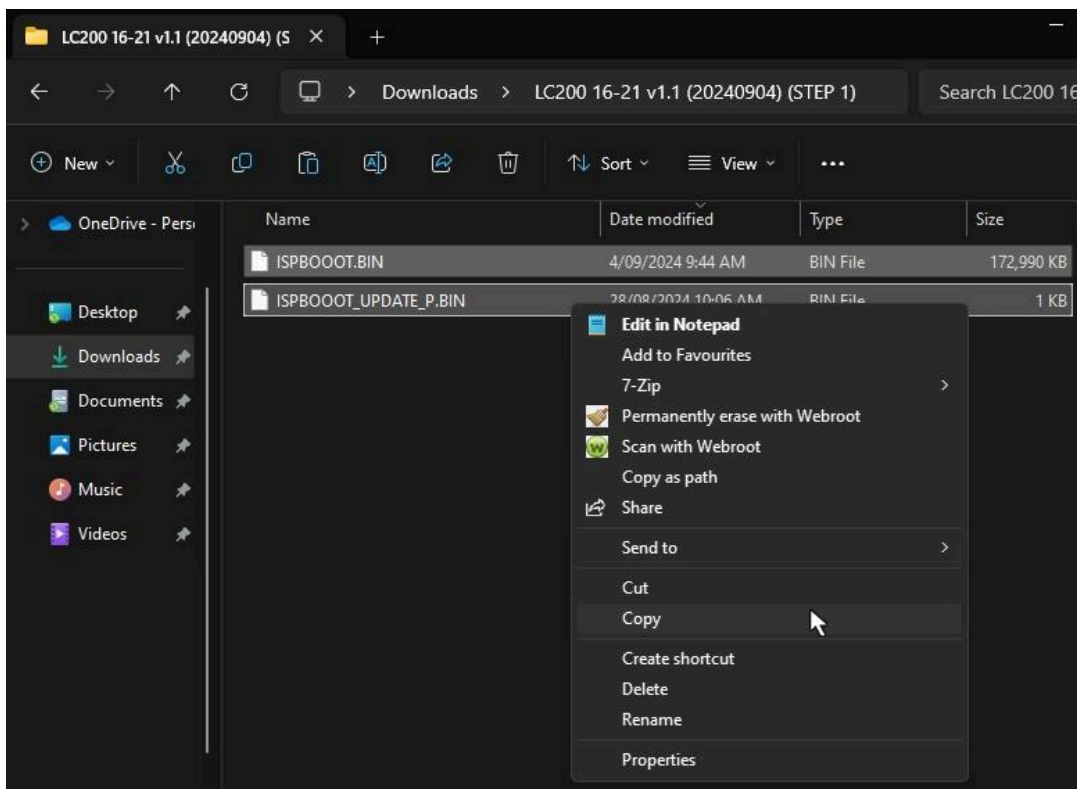
Plug in the USB device, ensuring it is blank, 32GB or less and is formatted in FAT32. You can format the USB device by right clicking the USB device and selecting format. Here you can make sure it is set to FAT32. **PLEASE BE AWARE, ALL YOUR FILES WILL BE DELETED ON THE USB WHEN FORMATTING.**



AMUTO53 Update Guide

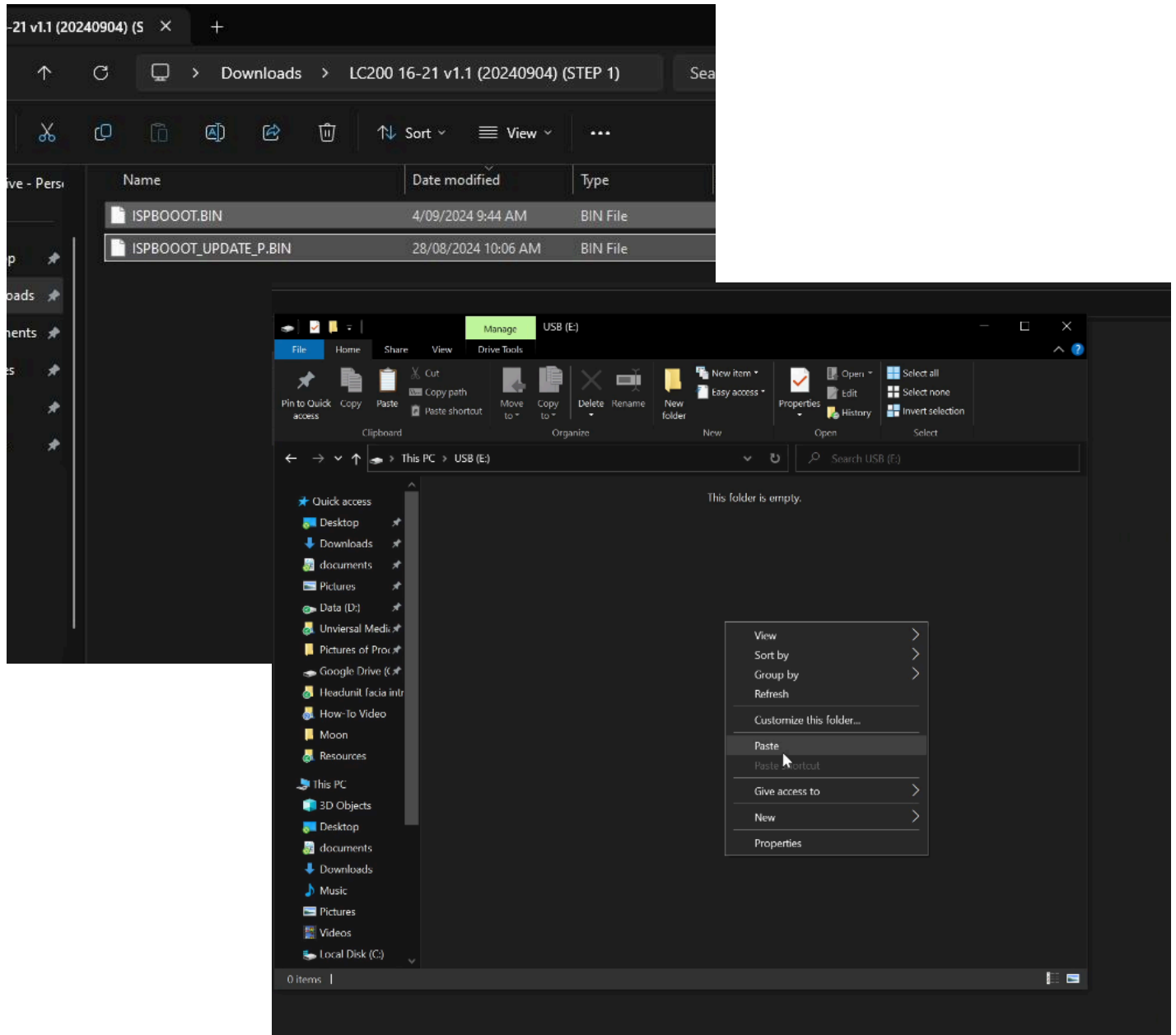


Once formatted, open up the downloaded zip file. Inside will be two folders. Step 1 & Step 2. Open up folder 1 and copy the contents onto the blank USB Device.



AMUTO53 Update Guide

Once you have copied, navigate to your inserted USB drive and right click in the empty spot and click paste. There should be 2 files on the USB device. Safely remove the USB device and move back to your vehicle to install the first step firmware.



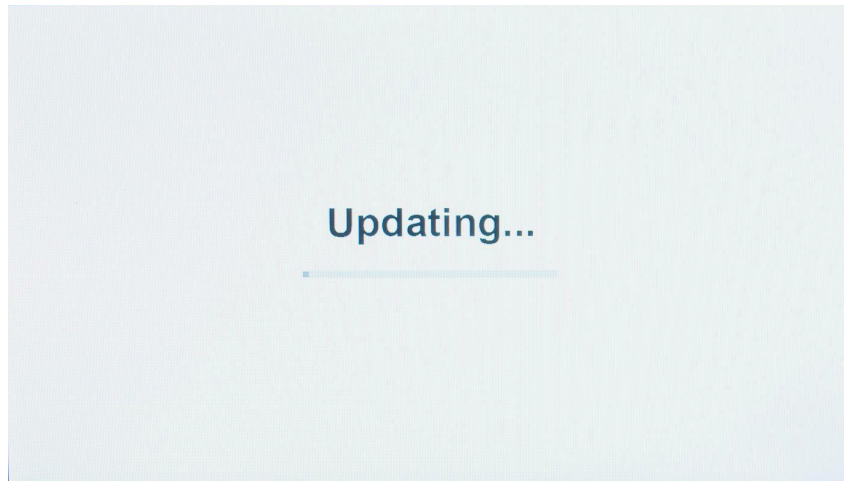
AMUTO53 Update Guide

It is **very important** that the following steps are followed exactly.

To install the update, turn on the unit without the update USB connected. Then once fully booted, plug in the update USB into the USB port for the headunit (NOTE: USB port has to be grey USB port used for CarPlay/Android Auto, this would typically be connected to the factory USB)

The unit will then ask if you want to install an update. If a window doesn't appear then navigate to the settings menu, click other, then choose 'Software Update'. It should then come up with a message box asking if you want to update. If it does not, then the update may not be copied to the USB correctly and you should try the procedure again.

Once you have confirmed the update, the system may reset a couple of times and show a black screen in between. **DO NOT TURN OFF THE VEHICLE DURING THIS PROCEDURE.** Please be patient with the process. An update screen will appear. Continue waiting and you will get a screen that looks similar to below.



The home screen may appear during the update process, but **continue to wait until a progress bar appears with a black screen.**

When the update is finished you will see the below message which means the update has been completed.

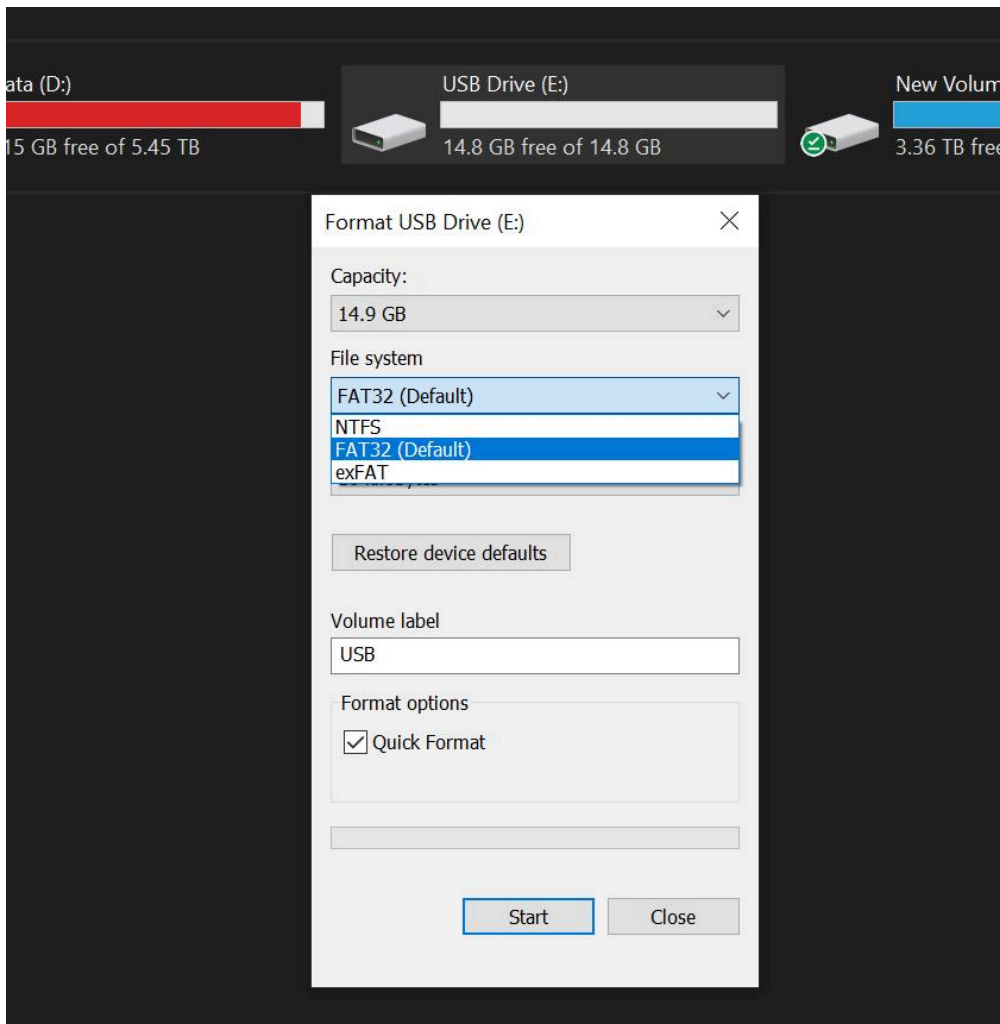
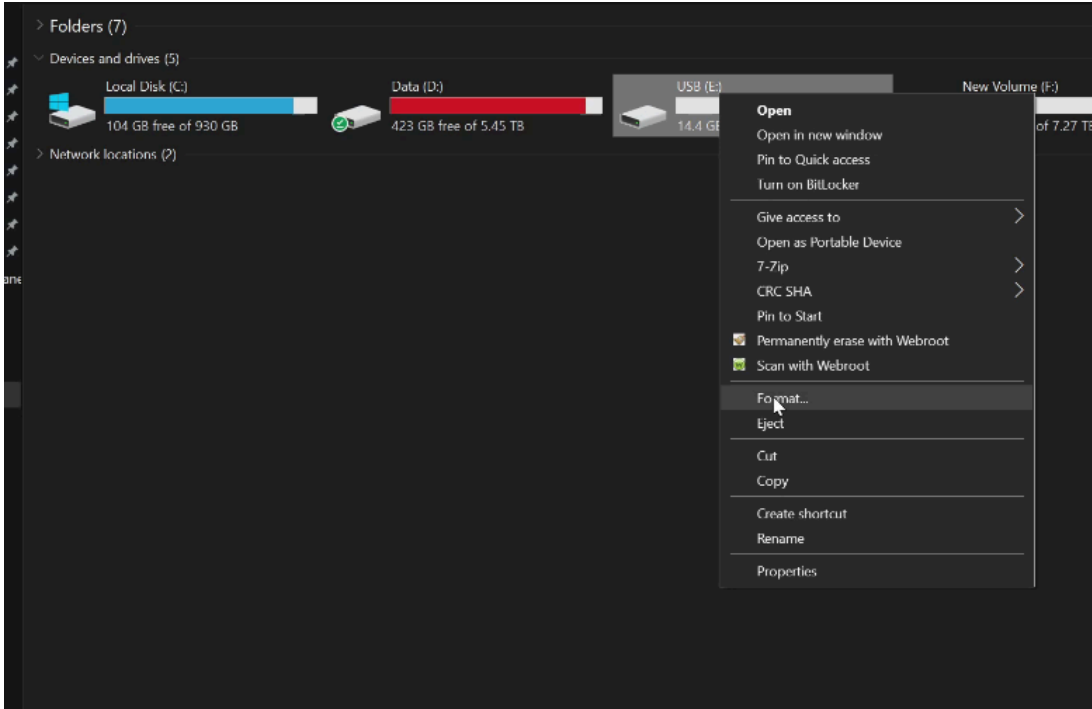


Please Remove the USB drive and restart the vehicle when this screen appears.

AMUTO53 Update Guide

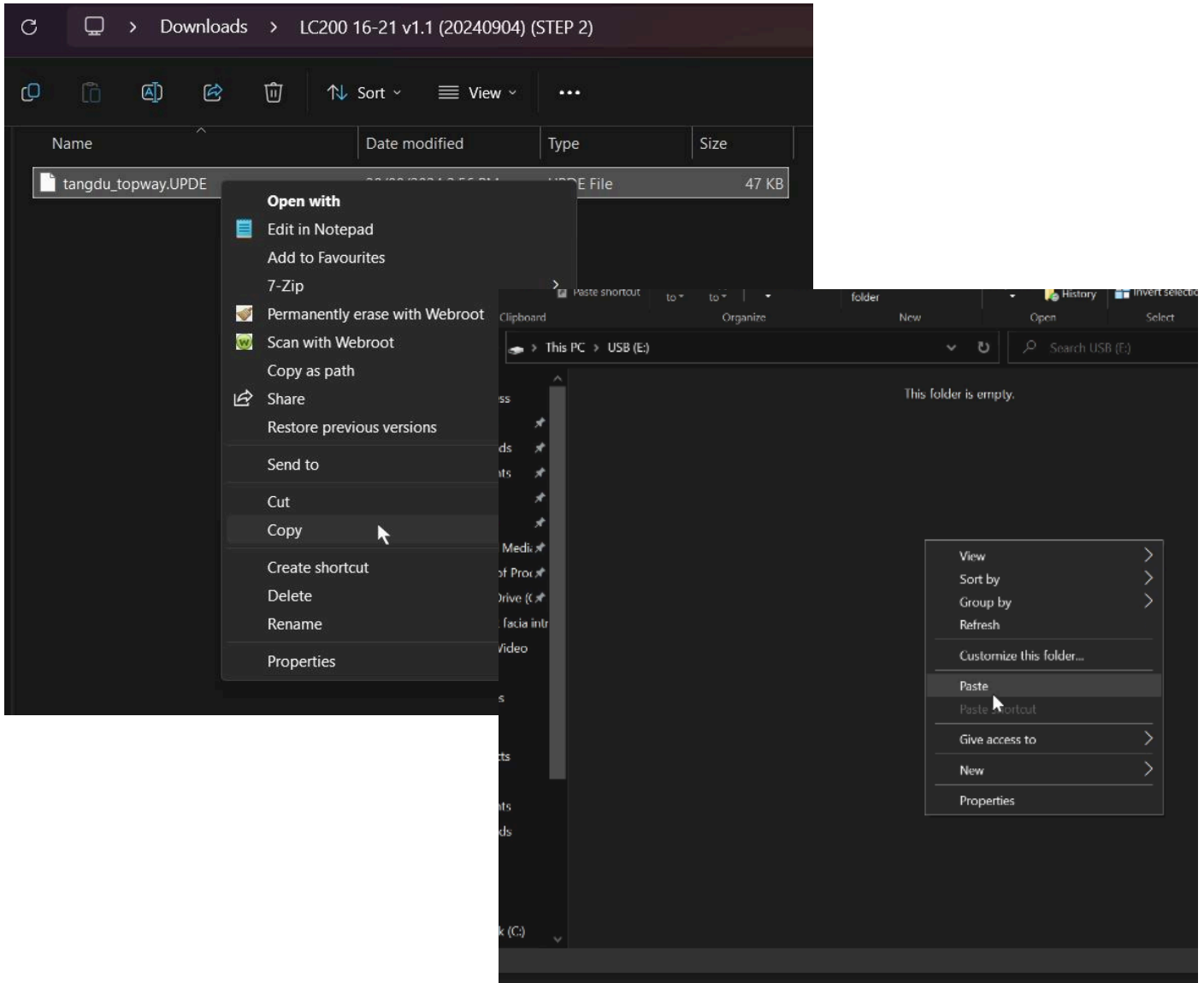
Step 2

Once the head unit is finished restarting, we can move onto **STEP 2** of the update. Take the USB to the computer, plug it in and do another format, like the process above.



AMUTO53 Update Guide

Once formatted and confirmed to be empty, we should open up the STEP 2 folder and copy the single file onto the USB



Safely remove the USB device and move back to your vehicle to install the second step firmware.

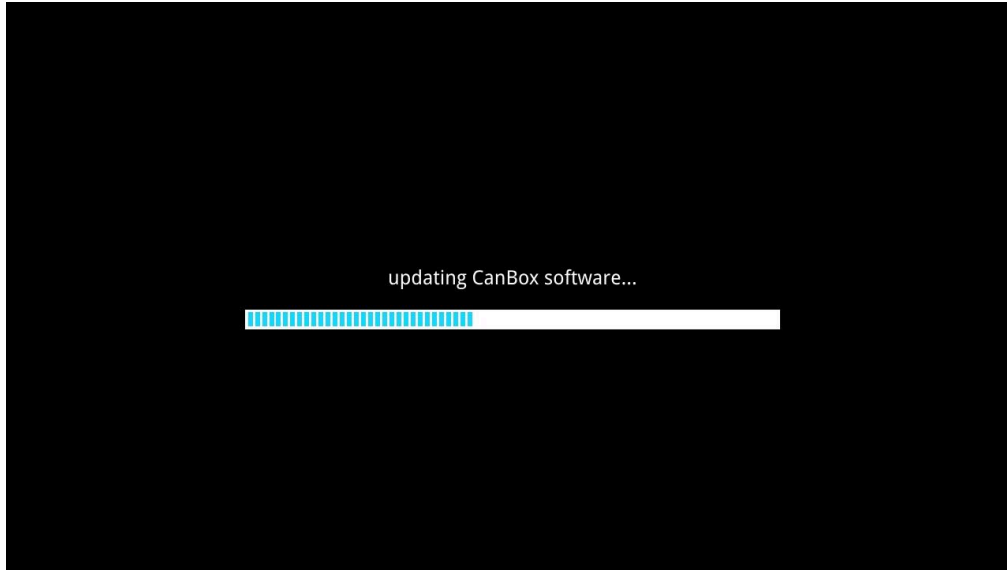
It is **very important** that the following steps are followed exactly.

To install the update, turn on the unit without the update USB connected. Then once fully booted, plug in the update USB into the USB port for the headunit (NOTE: USB port has to be grey USB port used for CarPlay/Android Auto, this would typically be connected to the factory USB)

Nothing should appear when USB is inserted. This is OK. Navigate to the Settings, Other tab and then tap 'Factory Reset'. Confirm the factory reset device.

AMUTO53 Update Guide

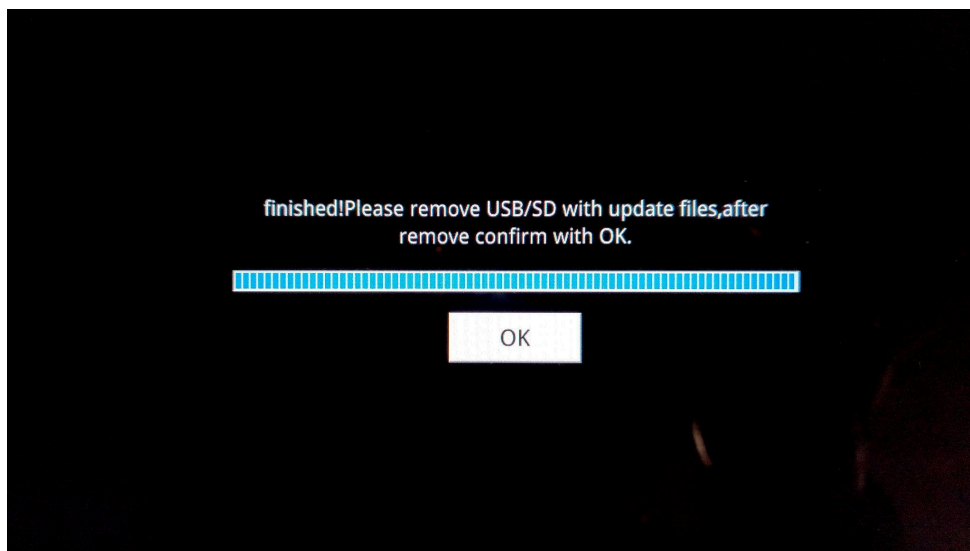
The unit will then reboot. Please do not touch anything while this process is happening. The head unit will automatically show the following screen with a progress bar like the image below. **NOTE: It may reboot a couple of times during this process. Please wait until it finished and asks to remove the USB**



If it does not, then the update may not be copied to the USB correctly and you should try the procedure again.

DO NOT TURN OFF THE VEHICLE DURING THIS PROCEDURE.

Please be patient with the process. Continue waiting and once the progress bar finishes you will get a screen that looks similar to below.



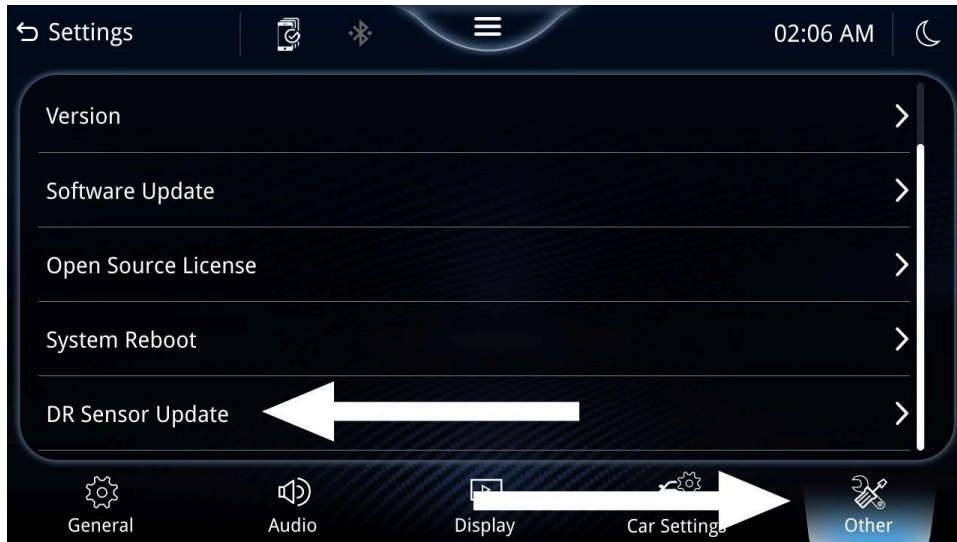
You will then be asked to **remove the USB BEFORE** pressing the **OK button** as the image above. Once the USB is taken out, you can continue by pressing the OK button on the screen. Pressing it once is sufficient, it will eventually restart. The update is now complete.

AMUTO53 Update Guide

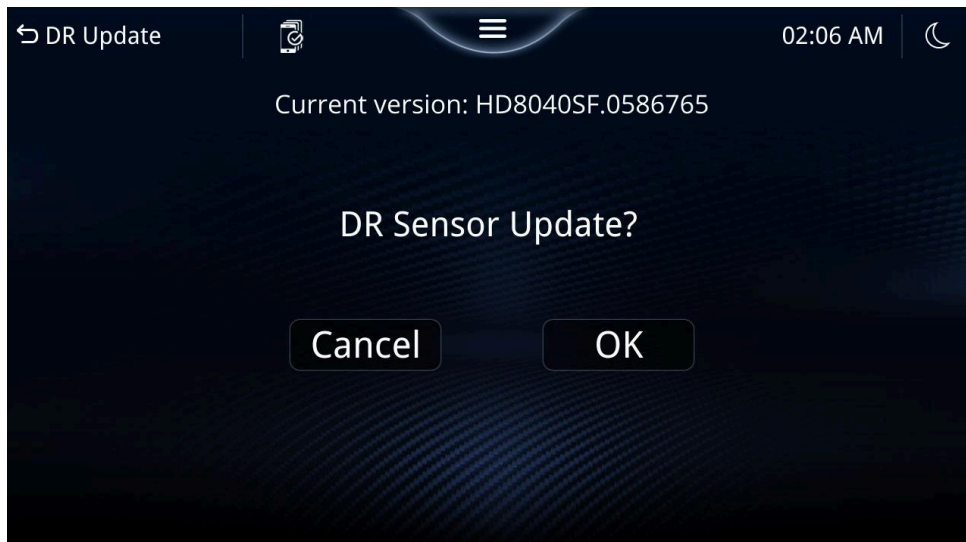
Fixing the inclinometer

You may also need to update the firmware of the inclinometer sensor module. This will only need to be done if you are on a particular version of the Sensor.

You can find out what the version you are on by navigating to the settings, tapping Other and then select DR Sensor Update

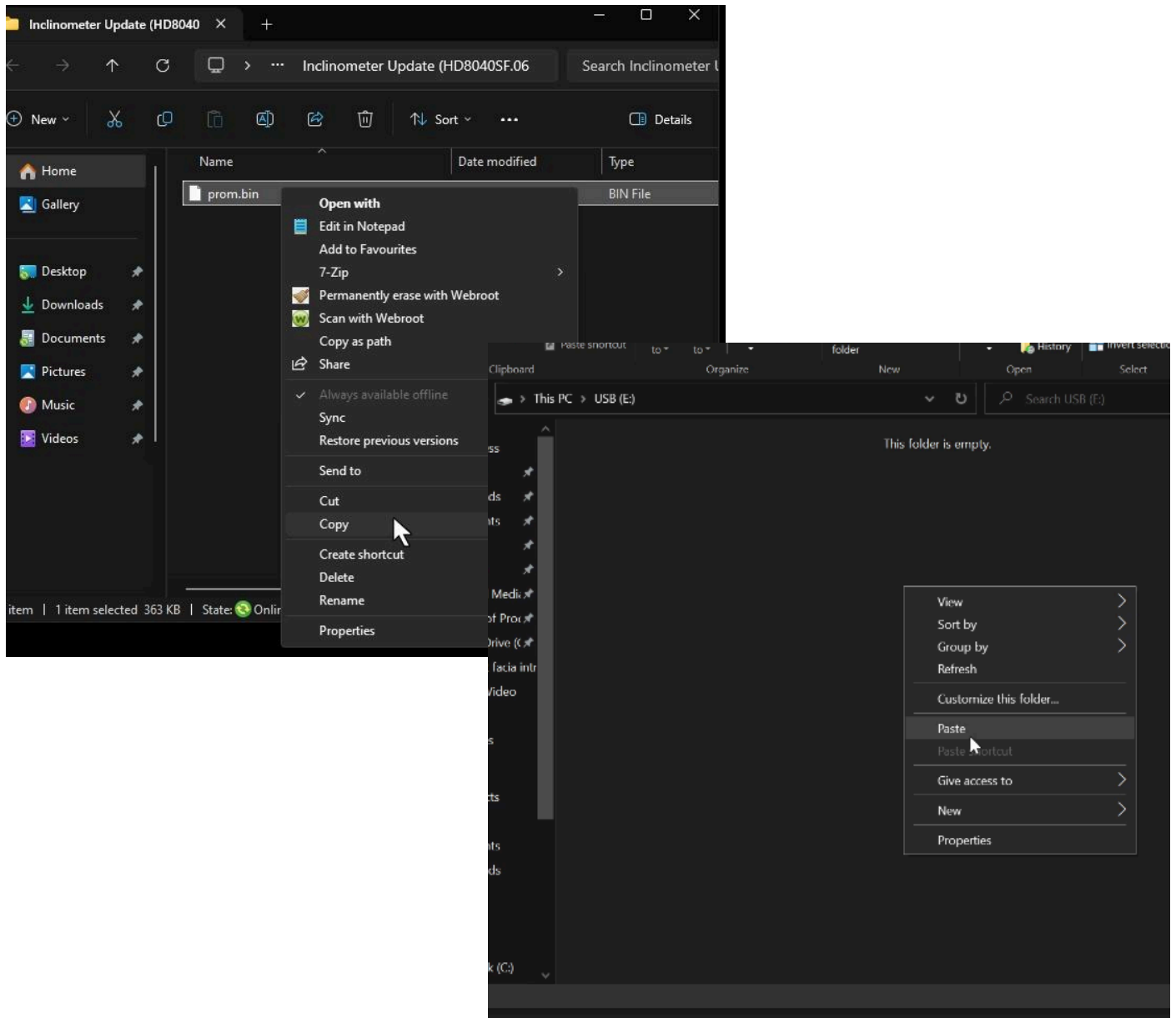


You will then be presented with a screen that will show an update screen and current version number. If the current version number says **HD8040SF.0586765** & you have issues with the inclinometer then you will need to update.



AMUTO53 Update Guide

Using the same process as earlier, format the USB on a computer and navigate to the 'Inclinometer Update (HD8040SF.0615412)' folder in the update zip file. Simply copy the single file called 'prom' over to a blank USB.



Come back to the head unit and plug it in the same USB port used previously. Then if you are still on the 'DR Sensor Update' screen, press OK. You should be presented with an update bar.

If there is no progress or the progress bar doesn't fully complete, turn the vehicle off then on and wait 30 seconds on the home screen for the sensor module to initialise and try this update process again.

Once completed, you can double check to ensure that the version number is changed to HD8040SF.0615412. If so, then the update is successful. Please bear in mind that the inclinometer may require re-calibrating and will take some time to fully calibrate depending on signal strength.

AMUTO53 Update Guide

It is recommended to turn off the car, wait 30 seconds then turn it back on. Then you can check the date number to make sure it has updated successfully and you may change the settings to your taste.

Changelog

Latest (v1.2)

- Fixed Dab Mute Icon issue
- Fixed some volume UI icons
- Changed the Mute icon
- Fixed Audio related muting issues
- New Features
 - Increase the hold to mute time. Reducing accidental volume down mutes
 - Added hold to mute to facia volume down button
 - Added Sub menu for Camera controls
 - Added Second Camera colour/flip adjustments separately

V1.1

- Park assist slight design changes
- Trip info design changes
- Inclinometer design changes
- Adjust some text in settings
- Fixed Audio Slider Bug
- Improved Reliability with 360 camera
- Updated / changed various climate related designs and bugs
- New Features
 - Holding the Volume Down for one second on the steering wheel will quickly mute audio.
 - Holding down the 'moon' icon on the top right corner of the home screen will turn off the display and mute the audio

For previous software updates, please visit

<https://tdj.com.au/firmware/Aerpro/AMUTO53/Updates/OLD/>