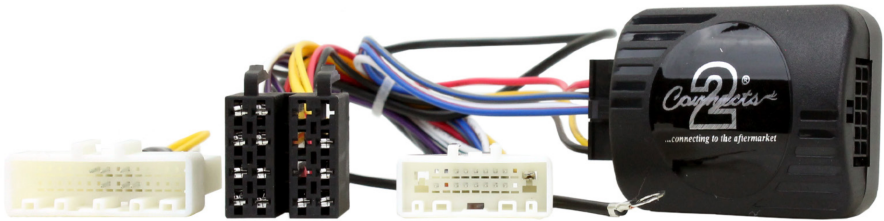


CHNI5C

Steering Wheel Control Interface *for select Nissan vehicles*



Vehicle Application

Nissan Juke (F15) 2010>
Nissan Micra (K13) 2010>
Nissan Sunny 2012>
Nissan March 2010>
Nissan Pulse 2011>
Nissan Evalia 2013>
Nissan Versa 2008>
Nissan Frontier 2009>
Nissan Pathfinder (R52) 2013>

Nissan Versa Note 2013>
Nissan NV200 2013>
Nissan Quest 2010>
Nissan Cube (Z12) 2009>
Nissan Xterra 2009 - 2016
Nissan Titan 2009>
Nissan Navara (D40) 2009>
Nissan Sentra 2013 - 2016
Nissan Cabstar 2014>

Key Features

- Retains Steering Wheel Controls (if equipped)
- Retains OEM Phone Buttons (if equipped)

Designed and
Engineered
in the UK. 

ABOUT THIS PRODUCT

CHNI5C

Analogue Steering Wheel Control Interface for select Nissan vehicles. With Bluetooth phone button support.

WIRING COLOUR CODES

Purple	Right Rear Speaker +	Yellow	Permanent 12V
Purple/Black	Right Rear Speaker -	Black	Ground
Green	Left Rear Speaker +	Red	Ignition 12V
Green/Black	Left Rear Speaker -		
Grey	Right Front Speaker +		
Grey/Black	Right Front Speaker -		
White	Left Front Speaker +		
White/Black	Left Front Speaker -		

PRIOR TO INSTALLATION

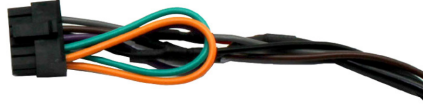
*Read the manual prior to installation. Technical knowledge is necessary for installation. The place of installation must be free of moisture and away from heat sources. Please ensure that the correct tools are used during the installation to avoid damage to the vehicle or product. **Aerpro can not be held responsible for the installation of this product.***

TECHNICAL SUPPORT

If you need assistance setting up or using your Aerpro product now or in the future, call Aerpro Support Australia
TEL: 03 – 8587 8898 FAX: 03 – 8587 8866 Mon-Fri 9am – 5pm AEST. If you would like to download a digital copy of this manual, or other Aerpro manuals/software, please visit the <http://aerpro.com> website.

FITTING GUIDE

1. Remove and disconnect the original head unit.
2. Connect the 12 way molex connector of the head unit patch lead (supplied separately) to the interface.



3. Connect the opposite end of head unit patch lead to the head unit steering wheel control input on the back of the aftermarket head unit.

NB: This may be a 3.5mm jack plug or a wire input depending upon the head unit brand being fitted. Please see the head unit installation manual for further information on where to connect.

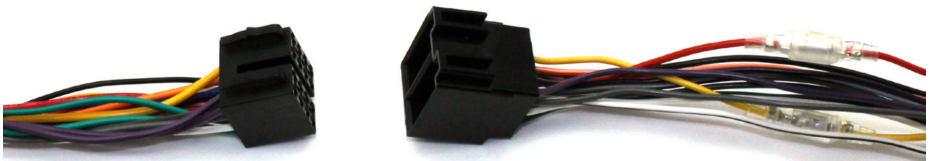
Important: This step must be completed before connecting power to the interface. Failure to do so may result in no steering wheel control function.



4. Connect the 14 way molex connector to the interface



5. Connect the male power/speaker ISO harness to the female power/speaker ISO harness from the aftermarket head unit. For aftermarket head units without an ISO connector, please refer to "Wiring Colour Codes" on Pg. 2.



FITTING GUIDE

6. For vehicles with phone buttons, locate the OEM bluetooth module. This is usually behind the glovebox or under the passenger seat. For Versa vehicles, it is in the right hand side of the boot behind the carpet. Disconnect the white 32 way connector and plug it into the white loop connector supplied with the interface.

7. Connect the female vehicle specific connector on the harness to the male vehicle connector from the vehicle. Test head unit for correct operation.

STEERING WHEEL CONTROL FUNCTIONALITY

Original Button	Function
+ Icon	Volume +
- Icon	Volume -
Track Forward	Track +
Track Backward	Track -
Pick Up Icon	Pick Up
Hang Up Icon	Hang Up
SOURCE	Source