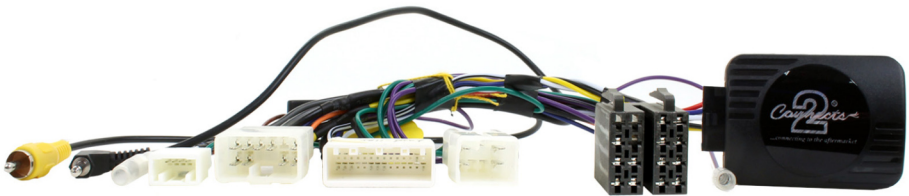


# CHSU12C

## Subaru Steering Wheel Control Interface



**Application:**

**Various models 2015>**

**Key Features:**

- Retains Steering Wheel Controls**
- Retains OEM Phone Buttons (if equipped)**
- Retains OEM Aux Input (if equipped)**
- Retains OEM Reverse Camera (if equipped)**

## ABOUT THIS PRODUCT...

---

### CHSU12C

Subaru Analogue Steering Wheel Control Interface with Aux and Camera Retention.

NB. The following must be set before head unit removal: rear cam time out, auto light sensor, welcome lighting, clock, interior lighting, defogger, keyless entry, one touch lane change

### Product Contents

1. Interface
2. Harness
3. Instruction

### Prior to installation

Read the manual prior to installation. Technical knowledge is necessary for installation. The place of installation must be free of moisture and away from heat sources. Please ensure you use the correct tools to avoid damage to the vehicle or product.

***Aerpro can not be held responsible for the installation of this product.***

### Wiring Colour Codes

Wire Colour	Function
Yellow	Permanent 12V
Black	Ground
Red	12V Ignition

Wire Colour	Function
Purple	Right Rear Speaker +
Purple/Black	Right Rear Speaker -
Green	Left Rear Speaker +
Green/Black	Left Rear Speaker -
Grey	Right Front Speaker +
Grey/Black	Right Front Speaker -
White	Left Front Speaker +
White/Black	Left Front Speaker -

### Technical Support

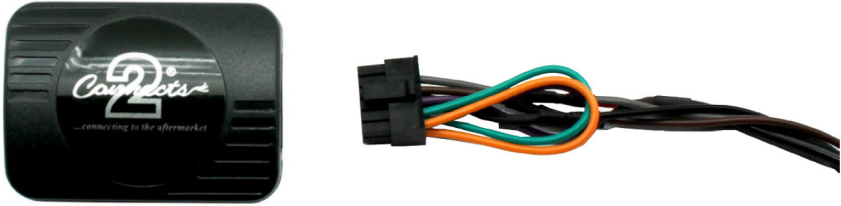
Aerpro want to provide a fast and suitable resolution should you encounter any technical issues. With this in mind, when contacting Aerpro, try to provide as much information as possible. This will speed up the process and help us to help you.

**Please contact: [aerpro.com/contact](http://aerpro.com/contact)**

## FITTING GUIDE

---

1. Remove and disconnect the original head unit.
2. Connect the 12 way molex connector of the head unit patch lead (supplied separately) to the interface.



3. Connect the opposite end of head unit patch lead to the head unit steering wheel control input on the back of the aftermarket head unit. This may be a 3.5mm jack plug or a wire input depending upon the head unit brand being fitted.

Please see the head unit installation manual for further information on where to connect.

**Important Note:** This step must be completed before connecting power to the interface. Failure to so do may result in no steering wheel control function.



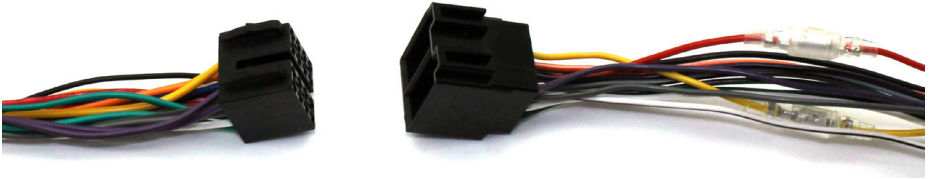
4. Connect the 14 way molex connector to the interface



## FITTING GUIDE

---

5. Connect the male power/speaker ISO harness to the female power/speaker ISO harness from the aftermarket head unit. For aftermarket head units without an ISO connector, please refer to the wiring colours on Pg. 2.



6. Connect the yellow RCA connector and 3.5mm jack connector to the back of the head unit for OEM reverse camera and aux input retention (if vehicle is equipped)

7. Connect the female vehicle specific connector to the male vehicle connector. Test head unit for correct operation.

## STEERING WHEEL CONTROL FUNCTIONS

---

