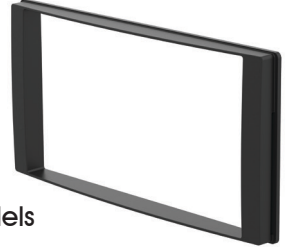


Double DIN Facia Kit to suit Subaru (Various Models)

Features:

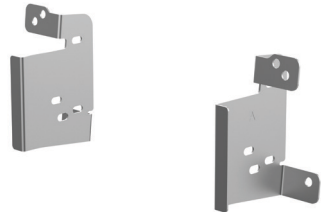
- Suits double DIN Head Unit installation
- Black colour
- High grade ABS plastic
- Includes brackets for both 3rd Gen and 4th Gen models



Compatible Models:

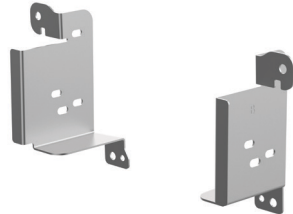
Vehicles using (A) bracket

Subaru Forester 2008-2012 SH
Subaru Impreza 2007-2011 GE, GH, GR, GV
Subaru Liberty (Exiga) 2009-2014 YA
Subaru WRX 2007-2014



Vehicles using (B) bracket (Factory Head Unit dependent)

Subaru Forester 2013-2014 SJ
Subaru Impreza 2012-2014 GP, GJ
Subaru WRX 2014-2015 (MY15)
Subaru XV 2012-2015



Inclusions:

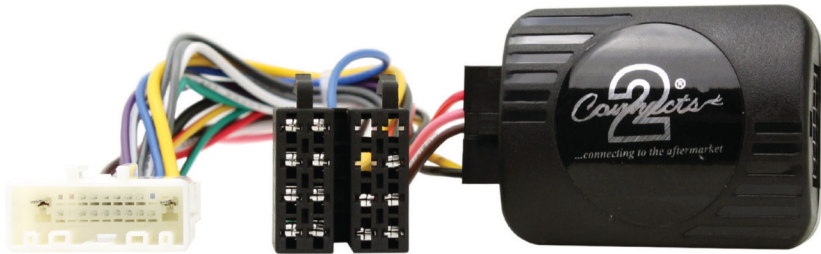
- 1 x Double DIN facia kit
- 2 x Metal mounting brackets (A) 3rd Gen models
- 2 x Metal mounting brackets (B) 4th Gen models



Scan the QR code
for more information
on the product

CHSU3C

Steering Wheel Control Interface *for select Subaru vehicles*



Vehicle Application

Subaru Forester (SJ) 2012 - 2013
Subaru Impreza (G4) 2012 - 2015
Subaru Outback (BR/BS) 2009 - 2014
Subaru XV (G4) 2012 - 2015

For vehicles without OEM Navigation

Key Features

- Retains Steering Wheel Controls (if equipped)
- Retains OEM Phone Buttons (if equipped)

Designed and
Engineered
in the UK. 

The information provided in this document is subject to change without notice due to manufacturer changes and/or improvements to the product/s.

ABOUT THIS PRODUCT

CHSU3C

Analogue Steering Wheel Control Interface for select Subaru vehicles without OEM navigation.

WIRING COLOUR CODES

Purple	Right Rear Speaker +	Yellow	Permanent 12V
Purple/Black	Right Rear Speaker -	Black	Ground
Green	Left Rear Speaker +	Red	Ignition 12V
Green/Black	Left Rear Speaker -		
Grey	Right Front Speaker +		
Grey/Black	Right Front Speaker -		
White	Left Front Speaker +		
White/Black	Left Front Speaker -		

PRIOR TO INSTALLATION

Read the manual prior to installation. Technical knowledge is necessary for installation. The place of installation must be free of moisture and away from heat sources. Please ensure that the correct tools are using during the installation to avoid damage to the vehicle or product.

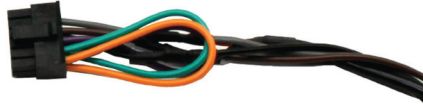
Aerpro can not be held responsible for the installation of this product.

TECHNICAL SUPPORT

If you need assistance setting up or using your Aerpro product now or in the future, call Aerpro Support Australia TEL: 03 – 8587 8898 FAX: 03 – 8587 8866 Mon-Fri 9am – 5pm AEST. If you would like to download a digital copy of this manual, or other Aerpro manuals/software, please visit the <http://aerpro.com> website.

FITTING GUIDE

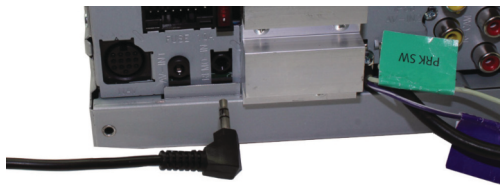
1. Remove and disconnect the original head unit.
2. Connect the 12 way molex connector of the head unit patch lead (supplied separately) to the interface.



3. Connect the opposite end of head unit patch lead to the head unit steering wheel control input on the back of the aftermarket head unit.

NB: This may be a 3.5mm jack plug or a wire input depending upon the head unit brand being fitted. Please see the head unit installation manual for further information on where to connect.

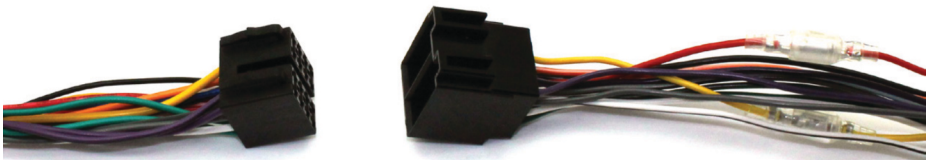
Important: This step must be completed before connecting power to the interface. Failure to so do may result in no steering wheel control function.



4. Connect the 14 way molex connector to the interface



5. Connect the male power/speaker ISO harness to the female power/speaker ISO harness from the aftermarket head unit. For aftermarket head units without an ISO connector, please refer to "Wiring Colour Codes" on Pg. 2.



FITTING GUIDE

6. Connect the female vehicle specific connectors on the harness to the male vehicle connector from the vehicle. Test head unit for correct operation.

STEERINGWHEELCONTROL FUNCTIONALITY

Original Button	Function
+ Icon	Volume +
- Icon	Volume -
Up Arrow	Track +
Down Arrow	Track -
Speech Button	Mute
Pick Up Icon	Pick Up
Hang Up Icon	Hang Up