

# INSPECTION CAMERA

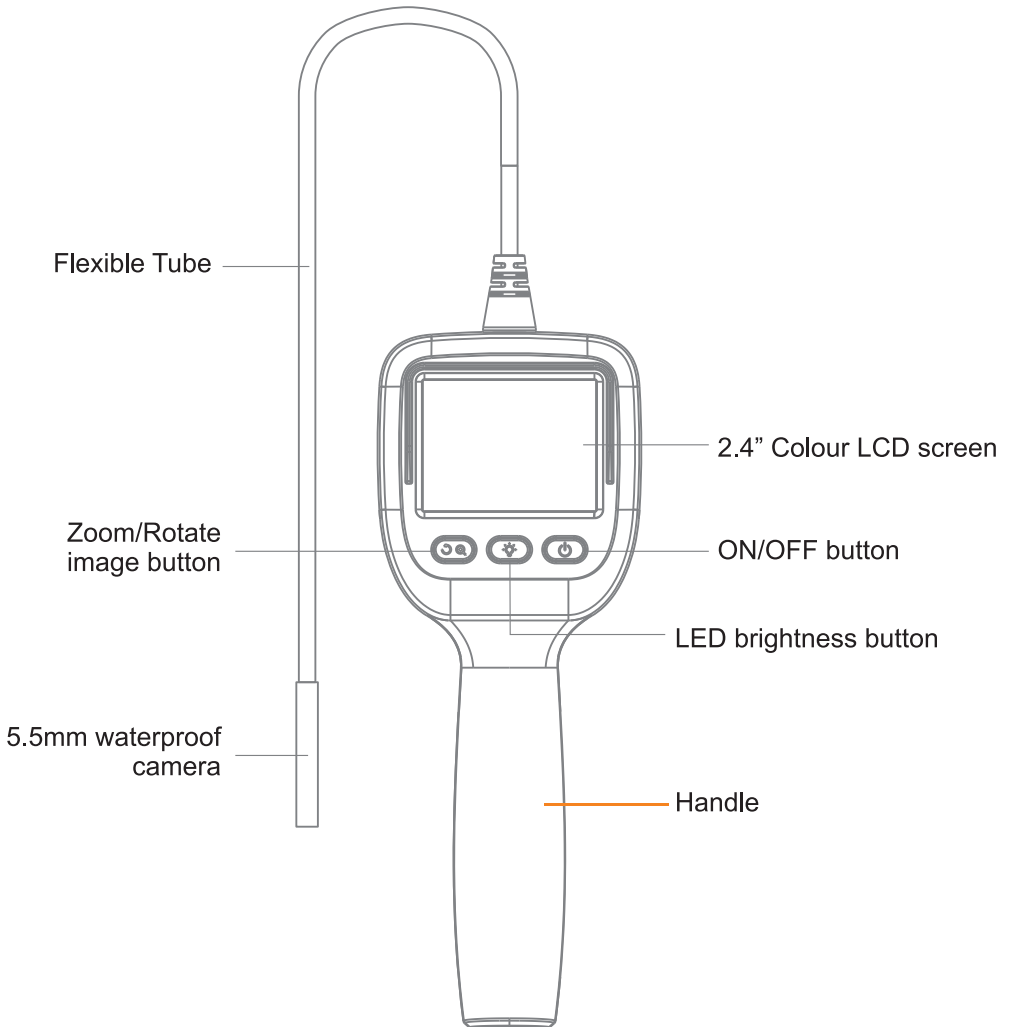
Colour LCD Monitor

## USER MANUAL



## Introduction

Please read this manual carefully before using the Inspection Camera and follow herein instructions to avoid damage caused by improper use.








## Using your inspection camera

ON/OFF: Press and hold the  button for 3 seconds

LED brightness adjustment: Press the  button to adjust the LED illumination level, until the maximum level is reached. Press again to turn off.

ZOOM/ROTATE: Short press the  button to enlarge the image on screen.

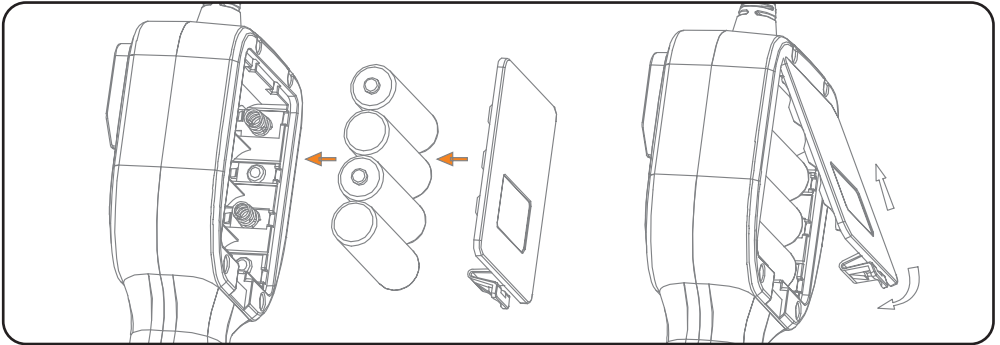
It will enlarge the image 1.5 to 2 times. Long press the  button for 3 seconds to mirror the image [     ].

## Battery installation

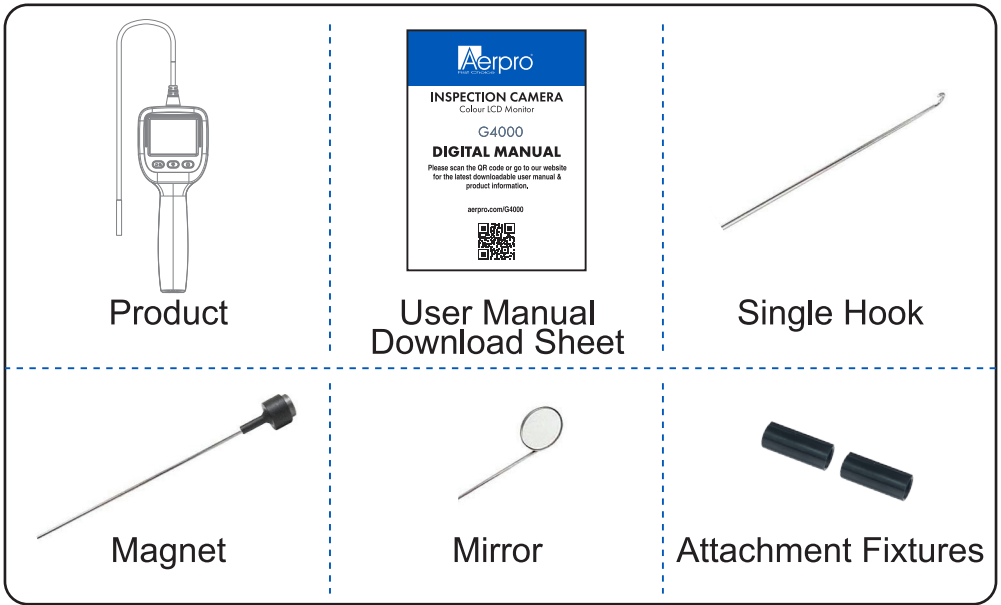
Open the battery compartment cover.

Insert four AA batteries into the battery compartment. Make sure the polarity of the batteries is correct.

Close the battery compartment cover to secure.

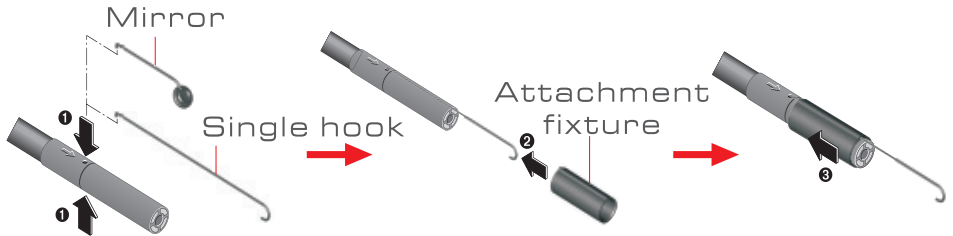


# Inclusions

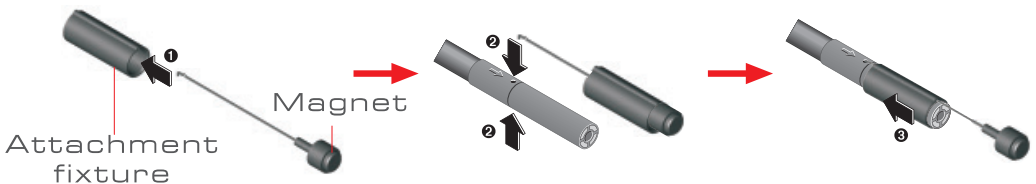


# Accessories Installation

First place the single hook or mirror into the hole on the lens as indicated by the arrow, and then push the attachment fixture.



2. Insert the magnet into the attachment fixture, with the pointed end placed into the hole on the lens as indicated by the arrow, and then tighten the attachment fixture to secure it as shown.



## Specifications

|                             |                                 |
|-----------------------------|---------------------------------|
| <b>Camera Lens Diameter</b> | 5.5mm                           |
| <b>Snake Tube Length</b>    | 1 metre                         |
| <b>Pixels</b>               | 640 x 480                       |
| <b>Screen Size</b>          | 2.4" TFT LCD                    |
| <b>Field Of View</b>        | 50°                             |
| <b>Waterproof Level</b>     | IP 67                           |
| <b>Sensor</b>               | 1/10" CMOS                      |
| <b>Manual Dimming</b>       | Support                         |
| <b>Enlarge/Mirror</b>       | Support                         |
| <b>Snake Tube Material</b>  | Flexible Metal Tube             |
| <b>Battery Type</b>         | 4 x AA Batteries (not included) |

## Specifications

If you need assistance setting up or using your Aerpro product now or in the future, call Aerpro Support Australia

TEL: 03 – 8587 8898 FAX: 03 – 8587 8866 Mon-Fri 9am – 5pm AEST

This manual is considered correct at time of printing but is subject to change.

For latest manuals and updates refer to the website.

**AERPRO.COM** 