



GALT02

QUICK START GUIDE



For more information
on the Gator range
go to our website

gatordriverassist.com 

The logo for Gator Driver Assist, which consists of a triangle containing a checkmark.

Please ensure that you have read the product quick start guide and instructions prior to installation and use. Failure to do so may result in the product incorrectly operating or an installation that renders the device unusable.

Product specifications

- Pitch angle: -40° - $+40^{\circ}$
- Roll angle: -40° $+40^{\circ}$
- Temperature accuracy: $\pm 1^{\circ}\text{C}$
- Air pressure: 300-1100hPa
- Voltage measurement range: DC 5-30V
- Voltage measurement accuracy: 0.5 V
- Speed precision: <0.36 Km/h
- GPS start time (Cold): 32s (Average)
- GPS start time (Hot): 1s (Average)
- Data refresh rate of GPS: 1s
- Operating temperature: -40°C + 80°C
- Power supply: DC 10V-30V
- Ambient light modes: 24 kinds

Display



- ① Elevation Altitude
- ② Pitch
- ③ Roll
- ④ Longitude & Latitude
- ⑤ Barometer
- ⑥ Digital Compass
- ⑦ Speed Meter
- ⑧ Thermometer
- ⑨ Voltage Indicator
- ⑩ Digital Clock / Date
- ⑪ Fatigue Alarm
- ⑫ GPS Data Collection
- ⑬ Volume Adjustment
- ⑭ Auto Brightness
- ⑮ Ambient Light
- ⑯ Speaker
- ⑰ Ambient Light Mode Setting/
Pitch & Roll Angle Reset

Functions

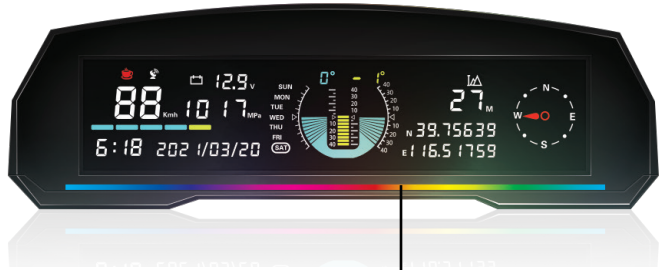
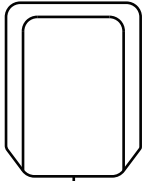
1. Elevation Altitude	When GPS data is collected, it will display the elevation altitude.
2. Pitch	Displays the pitch angle of the car's current position.
3. Roll	Displays the roll angle of the car's current position.
4. Longitude & Latitude	Displays the longitude & latitude of the vehicle's current location when GPS data is received.
5. Barometer	Displays the atmospheric pressure at the current location of the vehicle.
6. Digital Compass	When GPS data is collected, it will display the east, south, west, north, southeast, southwest, northeast, northwest directions according to the motion track of the vehicle.
7. Speed Meter	When GPS data is collected, it will display the vehicle speed.
8. Indoor Thermometer	It gets and displays the thermometer through the temperature sensor in the concentrator.
9. Voltage Indicator	Displays the actual voltage when the display is connected with the power (in Volts).
10. Electronic Clock	Display the year, month, day, hour of the week. After GPS data is obtained, it is automatically calibrated according to satellite timing.

Functions

11. Fatigue Alarm	When the vehicle has been working continuously for 4 hours, a fatigue driving icon will be displayed on the display to remind the driver that he needs to rest.
12. GPS data Collection	When GPS data is collected, it will display GPS icon to show that GPS data collection is in a normal state.
13. Volume Adjustment	Adjust device volume. Each press will cycle up through the values (0-9/ 0 is Mute)
14. Auto Brightness	The display will auto adjust the backlight brightness according to the outside brightness, so to make the display clear, soft and not dazzling.
15. Ambient Light	An ambient light strip is set under the display, and there are 0-24 ambient light display modes to choose from, and the ambient light can also be turned off as needed.
16. Overspeed Alarm	The display will alarm and make a beep, when the car speed exceeds the threshold, meanwhile the display speed will flash accordingly.

Installation

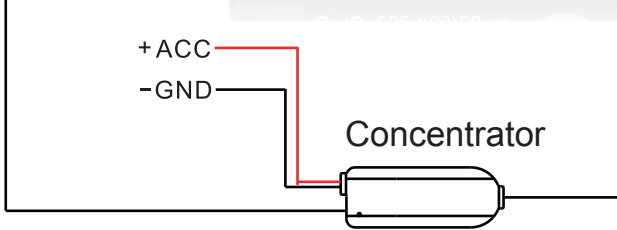
External GPS
Module



+ACC

-GND

Concentrator



1. Connect the ACC wire to the ACC power supply of the car, then connect the GND wire to a suitable ground point.
2. The plug of GPS module should be plugged into the socket of the concentrator, then position the GPS module in a suitable location on the dashboard in the vehicle to receive optimal signal.
3. It is recommended that the display is installed on the centre of the dashboard, close to the windscreen to enable wires to be hidden and ensure a good view for the driver. Install the display using 3M tape after first cleaning the surface.
4. After turning on the device for the first time, or after having moved the device, press and hold the reset button (17) whilst the device is powered on for 3-5 seconds to reset/zero the pitch and roll angle to ensure that the values are accurate.

Settings

Volume:

To change the default volume of the device, press the Volume Button(13) whilst the device is on. Each press will cycle up through the values (0-9/ 0 is Mute)

Time Zone:

To change the default time zone of the device, press and hold the Reset button(17) whilst the device is off (vehicle ignition is switched off). Then switch on the vehicle ignition, the current time zone setting will be displayed on the Temperature/Voltage display (8)(9).

Note: The default time zone is set to GMT.

Press the Power Button(17) to cycle to the desired value and then turn off the device. When the device is next powered on, the time zone will be set to the chosen value.

Measurement:

To measurement readings (speed, altitude,temperature) of the device can be adjusted from metric to imperial.

Note: The device is set to Metric by default.

	Metric	Imperial
Speed	Km/h	Mph
Altitude	m	ft
Temperature	°C	°F

To change the measurement type, Press and hold the Volume Button(13) whilst the device is off (vehicle ignition are switched off). Then switch on the vehicle ignition. The 'km/h 'M' 'C' (Metric) or 'mph', 'Ft', 'F' (Imperial) will be

Settings cont...

displayed on the screen. To cycle between the options, turn off the ignition and press and hold the Volume Button(13) to display the next option. Once the desired option has been set, turn on the device, the measurement will be set to the chosen type.

Ambient Light Mode:

The system provides a total of 24 ambient light modes from 0 to 24 to choose from. Each time you press the Power Button(17), the mode value is incremented by 1, and it is adjusted in cycles.

The corresponding relationship between the mode value and the ambient light mode is as follows:

0: No light

1: Colorful lights

2: Phantom lights

3-9: 7 Kinds of color static light

10-16: 7 Kinds of color breathing light

17-23: 7 Kinds of color running water light

24: Speed light

Over Speed Alarm Setting:

To change speed setting for overspeed alarm, press and hold the Volume Button(13) while the device is powered on for 3-5 seconds, the current speed setting will be displayed on the Speed display (5).

Note: The default speed is set to 190Km/h.

Press the Volume Button(13) to cycle to the desired value thenzzz wait for 3-5 seconds, the speed will be set to the chosen value.

Attention:

1. Due to the affect of the GPS signal, the speed may be delayed, and at the same time, the speed, electronic compass and elevation altitude can't be displayed normally.
2. The GPS signal has a great influence on the elevation altitude, so the lack of GPS signal is a little bigger when it's obstructed by surroundings (ie buildings, forest).
3. The temperature sensor is inside the concentrator, so the indoor temperature is dependent on its position inside the vehicle.

Technical assistance

If you need assistance setting up or using your Gator product now or in the future, call Gator Support Australia.

TEL: 03 – 8587 8898

FAX: 03 – 8587 8866

Mon-Fri 9am – 5pm AEST

Please retain this user guide for future reference

This manual is considered correct at time of printing but is subject to change. For latest manuals and updates refer to the website.

Copyright © 2022 by TDJ Australia

www.gatordriverassist.com